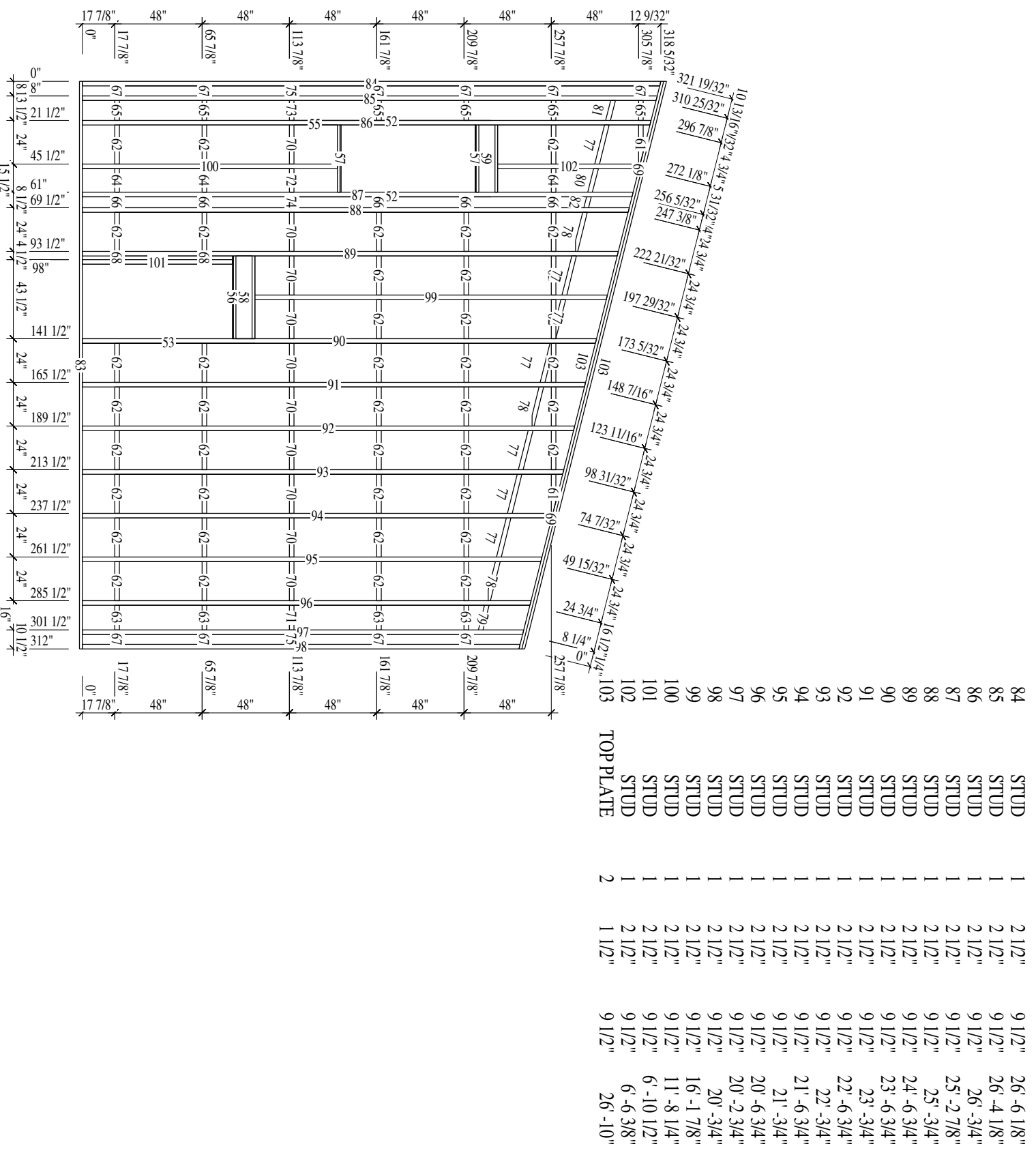




EAST WALL LIST

No. PL	Name	Quantity	Real width	Real height	Real Length
52		4	1 1/16"	1 1/2"	9'-1 7/16"
53		4	1 1/16"	1 1/2"	7'-10 7/8"
54		4	1 1/16"	1 1/2"	6'-10 1/2"
55		4	1 1/16"	1 1/2"	2'-15 1/16"
56	1/2 ZIP	1	9 1/2"	1 1/2"	3'-11 5/8"
57	1/2 ZIP	2	9 1/2"	1 1/2"	3'-3 1/8"
58	ENG. BEAM	2	2 1/2"	11 7/8"	3'-11 5/8"
59	ENG. BEAM	2	2 1/2"	11 7/8"	3'-3 1/8"
60	EXT BLOCKING	2	2 1/2"	1 1/2"	3'-3 1/8"
61	EXT BLOCKING	2	2 1/2"	1 1/2"	3'-3 1/8"
62	EXT BLOCKING	2	2 1/2"	1 1/2"	1'-9 1/2"
63	EXT BLOCKING	4	2 1/2"	1 1/2"	1'-9 1/2"
64	EXT BLOCKING	3	2 1/2"	1 1/2"	1'-1 1/2"
65	EXT BLOCKING	6	2 1/2"	1 1/2"	1'-1"
66	EXT BLOCKING	5	2 1/2"	1 1/2"	6"
67	EXT BLOCKING	10	2 1/2"	1 1/2"	5 1/2"
68	EXT BLOCKING	2	2 1/2"	1 1/2"	2"
69	EXT BLOCKING	2	1 1/4"	1 1/2"	1 1/16"
70	REBLCKING	10	2 1/2"	9 1/2"	1'-11 5/8"
71	REBLCKING	1	2 1/2"	9 1/2"	1'-3 5/8"
72	REBLCKING	1	2 1/2"	9 1/2"	1'-3 1/8"
73	REBLCKING	1	2 1/2"	9 1/2"	1'-3 1/8"
74	REBLCKING	1	2 1/2"	9 1/2"	1'-1 1/8"
75	REBLCKING	1	2 1/2"	9 1/2"	8 1/8"
76	REBLCKING	2	2 1/2"	9 1/2"	7 5/8"
77	REBLCKING	1	3/8"	6 1/2"	2 1/8"
78	NT BLOKING	7	2 1/2"	1 1/2"	1'-10 13/16"
79	NT BLOKING	3	2 1/2"	1 1/2"	1'-10 7/16"
80	NT BLOKING	1	2 1/2"	1 1/2"	1'-2 9/16"
81	NT BLOKING	1	2 1/2"	1 1/2"	1'-2"
82	NT BLOKING	1	2 1/2"	1 1/2"	11 15/16"
83	SILL PLATE	1	1 1/2"	9 1/2"	6 13/16"
		1	1 1/2"	9 1/2"	26"

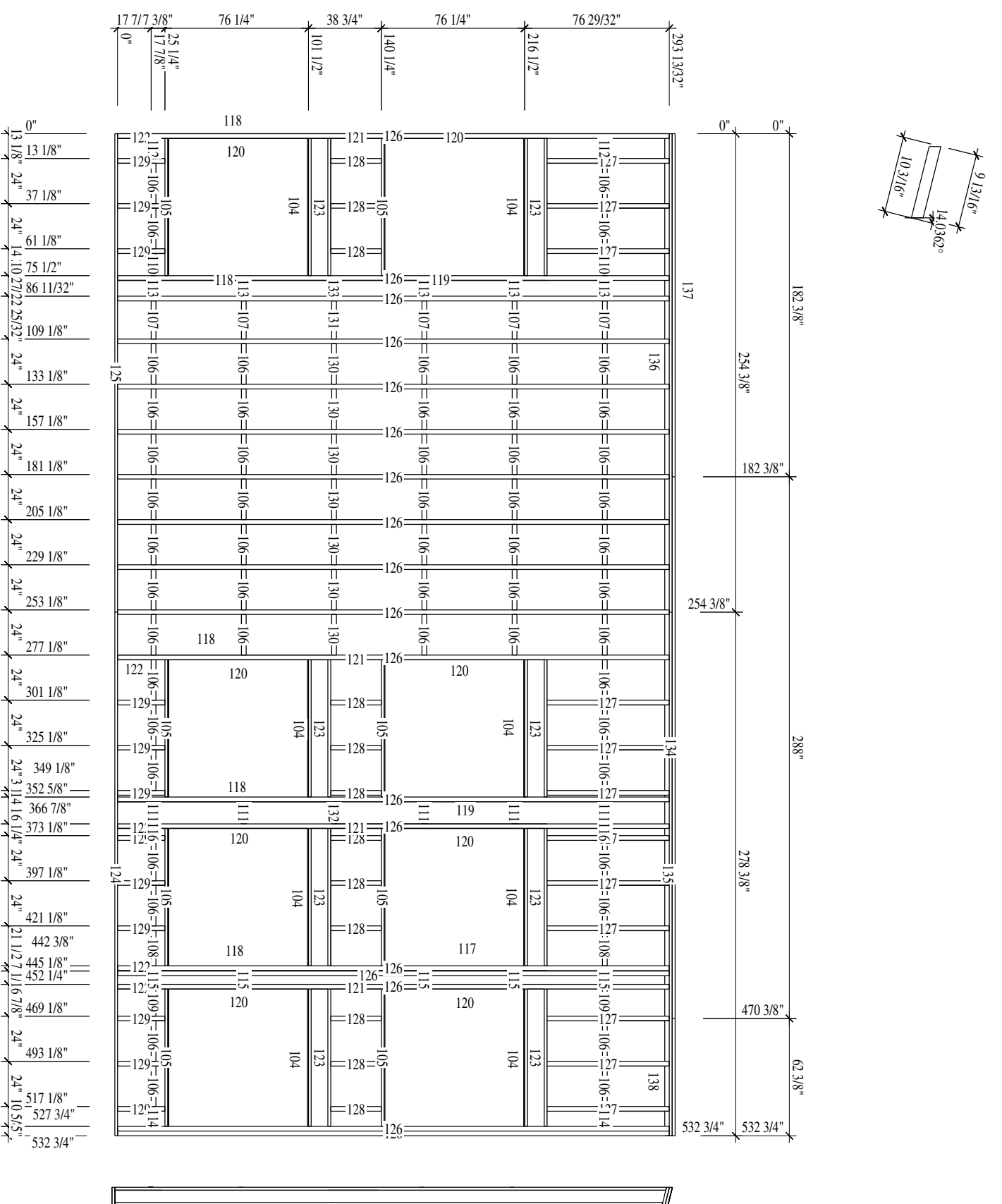


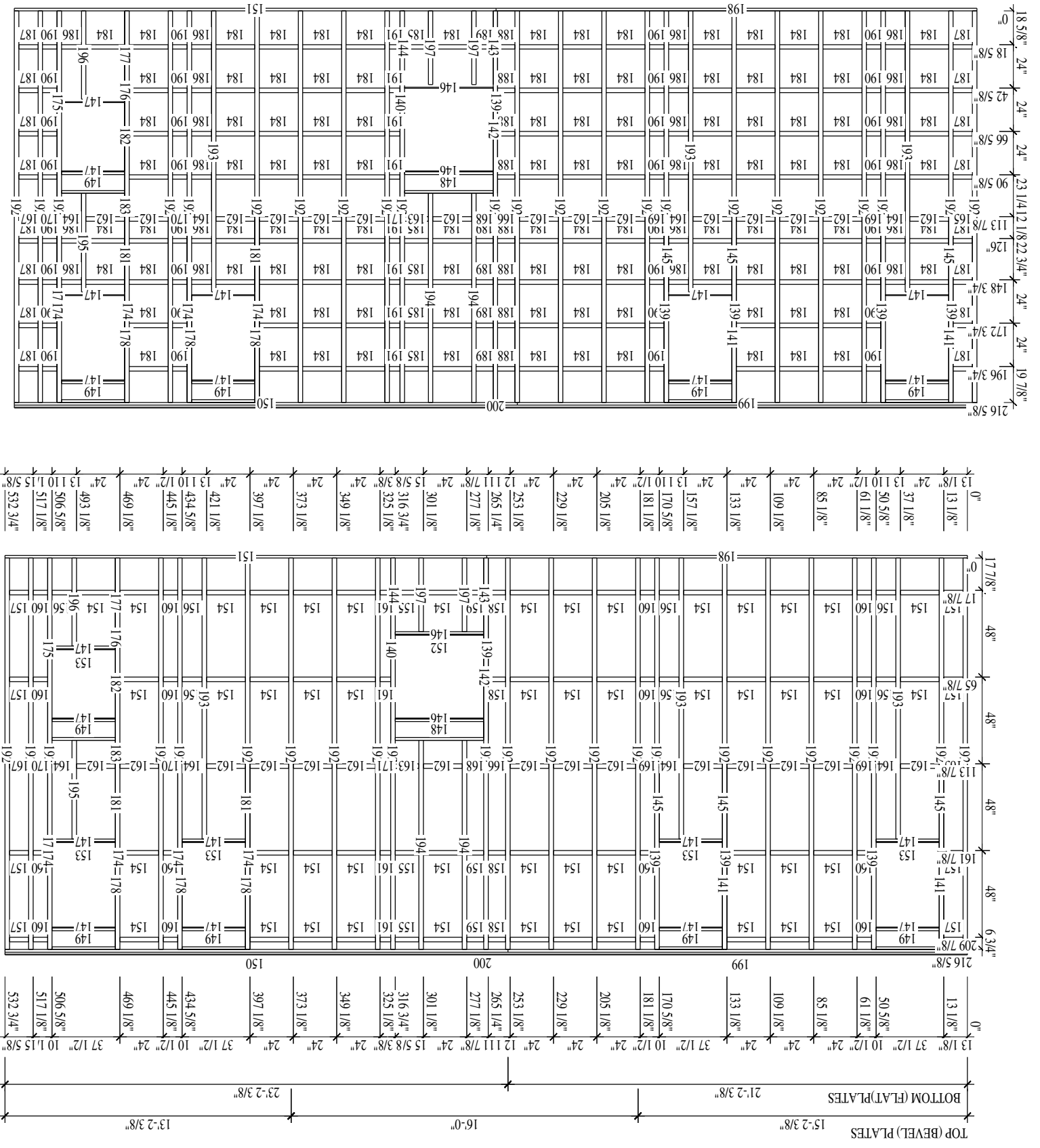
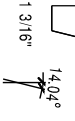
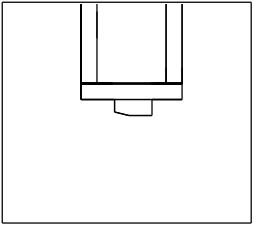
TOP PLATE

SOUTH WALL LIST

No.PL	Name	Quantity	Real width	Real height	Real Length
104	1/2 ZIP	16	9 1/2"	1/2"	6'-3 1/8"
104	10EXT BLOCKING	16	2 1/2"	1 1/2"	6'-3 1/8"
104	10EXT BLOCKING	53	2 1/2"	1 1/2"	1'-9 1/2"
104	10EXT BLOCKING	5	2 1/2"	1 1/2"	1'-8 1/4"
104	10EXT BLOCKING	2	2 1/2"	1 1/2"	1'-6 3/4"
104	10EXT BLOCKING	2	2 1/2"	1 1/2"	1'-2 3/8"
104	10EXT BLOCKING	2	2 1/2"	1 1/2"	11 7/8"
104	10EXT BLOCKING	5	2 1/2"	1 1/2"	10 5/8"
104	10EXT BLOCKING	2	2 1/2"	1 1/2"	8 3/8"
104	10EXT BLOCKING	2	2 1/2"	1 1/2"	4 5/8"
104	10EXT BLOCKING	2	2 1/2"	1 1/2"	3 3/4"
104	10EXT BLOCKING	8	1 1/16"	1 1/2"	9'-7"
104	GUSSET	16	1 1/16"	1 1/2"	9'-5 3/8"
104	GUSSET	6	1 1/16"	1 1/2"	9'-5 1/16"
104	GUSSET	30	1 1/16"	1 1/2"	6'-1 3/4"
104	GUSSET	14	1 1/16"	1 1/2"	2'-2 7/8"
104	GUSSET	16	1 1/16"	1 1/2"	2'-1 1/4"
104	HEADER	16	2 1/2"	11 7/8"	6'-3 1/8"

124	SILL PLATE	1	1 1/2"	9 1/2"	23'-2 3/8"
125	SILL PLATE	1	1 1/2"	9 1/2"	21'-2 3/8"
126	STUD	18	2 1/2"	9 1/2"	24'-5 7/16"
127	STUD	12	2 1/2"	9 1/2"	5'-5 1/16"
128	STUD	12	2 1/2"	9 1/2"	2'-2 7/8"
129	STUD	12	2 1/2"	9 1/2"	2'-1 1/4"
130	STUD	7	2 1/2"	9 1/2"	1'-11 5/8"
131	STUD	1	2 1/2"	9 1/2"	1'-10 3/8"
132	STUD	1	2 1/2"	9 1/2"	1'-1 7/8"
133	STUD	1	2 1/2"	9 1/2"	10 1/2"
134	TOP PLATE	1	1 1/2"	10 3/16"	24
135	TOP PLATE	1	1 1/2"	10 3/16"	23'-2 3/8"
136	TOP PLATE	1	1 1/2"	10 3/16"	21'-2 3/8"
137	TOP PLATE	1	1 1/2"	10 3/16"	15'-2 3/8"
138	TOP PLATE	1	1 1/2"	10 3/16"	5'-2 3/8"





No. Pl.	Name	Quantity	Real width	Real height	Real Length
139	15EXT BLOCKING	10	1 1/16"	1 1/2"	8'-5 5/16"
140	15EXT BLOCKING	2	1 1/16"	1 1/2"	8'-4 7/8"
141	15EXT BLOCKING	8	1 1/16"	1 1/2"	3'-10 3/4"
142	15EXT BLOCKING	4	1 1/16"	1 1/2"	3'-9 3/4"
143	15EXT BLOCKING	3	2 1/2"	2 1/2"	1'-1 1/8"
144	15EXT BLOCKING	7	2 1/2"	2 1/2"	11"
145	15EXT BLOCKING	8	1 1/16"	1 1/2"	10 5/8"
146	15EXT BLOCKING	2	1 1/16"	1 1/2"	9'-7 3/4"
147	1/2 ZIP	2	1 1/16"	1 1/2"	8'-5 5/16"
148	1/2 ZIP	2	1 1/16"	1 1/2"	8'-4 7/8"
149	ENG. BEAM	10	2 1/2"	2 1/2"	11 7/8"
150	ENG. BEAM	1	1 1/2"	1 1/2"	23'-2 3/8"
151	ENG. BEAM	1	1 1/2"	1 1/2"	22'-2 3/8"
192	STUD	24	2 1/2"	2 1/2"	18'-5/8"
193	STUD	3	2 1/2"	2 1/2"	12'-11 1/2"
194	STUD	2	2 1/2"	2 1/2"	9'-7 3/4"
195	STUD	1	2 1/2"	2 1/2"	4'-6 5/8"
196	STUD	1	2 1/2"	2 1/2"	4'-3/4"
197	STUD	2	2 1/2"	2 1/2"	3'-4 3/4"
198	TOP PLATE	1	1 1/2"	1 1/2"	21'-2 3/8"
199	TOP PLATE	1	1 1/2"	1 1/2"	21'-2 3/8"
200	TOP PLATE	1	1 1/2"	1 1/2"	44'-4 3/4"